

Review of Japanese Southern Bluefin Tuna Fisheries in 2015

日本のミナミマグロ漁業のレビュー：2015年

Izumi Yamasaki¹, Tomoyuki ITOH¹ and Ryo Omori²

山崎いづみ¹・伊藤智幸¹・大森 亮²

1: National Research Institute of Far Seas Fisheries, Japan Fisheries Research and Education Agency,

2: Fisheries Agency of Japan

1: (国研) 水産研究教育機構 国際水産資源研究所

2: 水産庁

要約

本文書では、日本はえ縄漁業による 2015 年のミナミマグロの漁獲量、努力量、ノミナル CPUE、体長組成、隻数と操業海域分布を記す。2015 年には 90 隻により 4,130 トン、約 8.5 万尾を漁獲した。科学オブザーバを 21 隻に配乗し、SBT 漁獲尾数で 18.0% をカバーした。耳石 794 個体を収集し、210 個体分の年齢査定を行った。

Summary

This document describes the Japanese commercial longline fishery for southern bluefin tuna (SBT) for catch, effort, nominal CPUE, length frequency, number of vessels and geographical distribution of fishing operations in 2015. In 2015, 90 vessels caught 4,130 ton and about 85,000 individuals of SBT. Scientific observers were deployed on 21 vessels and covered 18.0 % of the number of SBT caught by all vessels. Otoliths were collected from 794 SBT from scientific observer program and 210 SBT were age estimated.

1. 緒言 Introduction

定められた提出書式（Template for the annual review of national SBT fisheries for the Extended Scientific Committee）に従い、日本によるミナミマグロ漁業の歴史と 2015 年の状況を概観する。日本のミナミマグロの漁獲は全てはえ縄による。漁獲は 1952 年に本格的に始まった。当初漁獲されていたミナミマグロは、インド洋東部の低緯度水域（CCSBT 統計海区 1,2 海区;以下では単に海区と称す）でのメバチやキハダを対象とした操業で混獲された経産卵魚であり、その肉質は非常に悪かった。その後、良質の魚を求めて漁場は高緯度域へと拡大していき、1956 年にニュージーランド北東部海域（5 海区）、1961 年にタスマニア島周辺からオーストラリア南東岸沖（4,7 海区）、1965 年に南インド漁場（8 海区）、1967 年にケープ沖漁場（9 海区）が開発された。1960 年代にミナミマグロを対象としていた操業隻数は約 300 隻であった。さらに、ニュージーランド東部からチリ沖合にかけての海域、ケープの西沖からアルゼンチン沖合にかけての海域でも操業が行われた。これらの海域では、ミナミマグロの漁獲はあったものの、その分布密度が低いと評価されたため、主要な漁場とはならなかった。

1970 年代には、親魚の漁獲量の減少と、総漁獲に占める小型魚の増加から、資源量の低下が懸念され、1971 年 10 月から産卵場における 12-3 月の操業、ならびに小型魚が多獲される漁場（シドニー沖 5-7 月、オーストラリア大湾 10-3 月、ケープ沖 10-1 月）での操業を禁止する国内規制が導入された。これらの規制ならびに漁業者がより高価な漁獲物を志向するようになったことにより、1・2 海区での操業は激減した。また、1973-1974 年に日本のまぐろはえ縄漁業では深縄を導入し始め、ミナミマグロ狙いからメバチ狙いへ転換していく船も相当数あった。

1980 年代前半にオーストラリアの表層漁業による漁獲が急増したのに対し、日本のはえ縄漁業での漁獲量は低下した。1982 年には日、豪、NZ によるミナミマグロ三国間会議が組織され、1985 年に 3 国の漁獲割当量が設定された。この時点での日本の割当量は 23,150 トンであり、その後 1986 年会議で 19,500 トン、1988 年会議で 8,800 トン、1989 年会議で 6,065 トンへと漸減した。1989 年以降、漁獲枠管理のため、日本は公的に操業海区/時期規制を導入した。1994 年にはミナミマグロ保存条約（CCSBT）が発効した。日本の漁獲割当量は 1997 年まで 6,065 トンが維持され、その後、2003 年の年次会合において 6,065 トンで合意されるまで自主規制枠（6,065 トン）を設定していた。2006 年の漁獲割当量も前年同様の 6,065 トンであったが、2005 年に 1790 トンの漁獲量超過が見つかったため、同量を差し引いた 4,275 トンを漁獲量の上限として漁獲が管理された。2006 年の年次会合では、2007 年以降 5 年間の日本の漁獲割当量を 3000 トンに削減することで合意されたものの、資源状態の悪化を受けて 2010・2011 年の漁獲量の上限をそれぞれ 2,200 トン・2,600 トン¹として管理した。その後の日本の漁獲割当量は、2012 年は 2,519 トン、2013 年は 2,703 トン、2014 年は 3,403 トン、2015 年は 4,737 トンで推移している²。

割当量に対する日本漁船の漁獲量の管理方策としては、1990 年から 2005 年までは、主要 3 漁場に対し、入漁隻数、操業開始日、漁場別の漁獲割当量を各々設定し、漁獲状況に応じて漁場閉鎖日を設定するオリンピック方式の漁業管理制度を用いていたが、2006 年からは個々の漁船に対する漁獲枠の個別割当制度（IQ 制）へ転換した。また同年より、漁獲したミナミマグロ全個体に識別標識を装着する制度を併せて導入し、漁獲量管理を強化した。現在、ミナミマグロの高い CPUE に対し、各漁船は少ない漁獲枠しか持たないため、少ない操業回数で漁獲枠を消化しミナミマグロ漁場を離脱するケースが多い。2015 年における日本漁船の操業パターンの詳細は CCSBT-ESC/1609/22 を参照。

¹ ニュージーランドからの年間移譲分（139 トン）が含まれる。

² 繰越を含まない。

2. 漁獲量と努力量 Catch and Effort

1965年から最近年までのミナミマグロの漁獲尾数と努力量（釣鈎数）を CCSBT 統計海區別または月別に示す（Table1-4）。近年の漁獲の多くは 4 海区、7 海区、8 海区、9 海区からのものであり、また 4 月から 9 月のものである。努力量も同様だが、例えば 2 海区のように他の海区、月の占める割合が漁獲尾数での割合よりも多い。これはミナミマグロが 1 個体でも漁獲された場合、その年のその 5 度区画の努力量は全て含めるという CCSBT のデータ特性による。

日本はえ縄船によるミナミマグロの製品形態は、基本的に鰓、内臓、および尾部を除去した「GG」であり、原魚重量換算する場合は製品重量に係数「1.15」を掛け合わせる。2015 年の日本商業はえ縄漁船による総漁獲重量は 4,130 トン、総漁獲尾数は約 8.5 万尾であった。なお、漁獲統計値は提出された漁獲成績報告書に基づくが、漁獲成績報告書の収集およびデータ処理は漸次行われるため、最近数年間は値が変更されていく。本レポートの 2015 年の統計値は主として RTMP 調査から得られた暫定値である。日本はえ縄船からは個別漁獲枠の有効利用の面から放流が行われている。2015 年には合計 12,208 尾の放流、投棄が漁船から RTMP により報告された。11,181 個体（91.6%）は生存放流で、1,027 個体（8.4%）は死亡投棄であった。

3. ノミナル CPUE Nominal CPUE

1965 年から最近年までの Nominal CPUE を、CCSBT 統計海區別（Table 5）ならびに月別（Table 6）に示す。CPUE は 7 海区、8 海区、9 海区で他の海区よりも高く、それらの海区での操業時期である 4 月から 12 月に高い。

4. サイズ組成 Size composition

1995 年に RTMP がミナミマグロ対象漁船全船に拡大されてから、RTMP で報告する全てのミナミマグロについて、個体別の体長が船上で測定され報告されるようになった。それに伴い、日本はえ縄船のほぼ全てのミナミマグロ漁獲について、体長データが得られている。

10 年ごとの合計漁獲尾数から求めた体長組成を Fig.1 に示す。体長モードは 1960-1980 年代には 150cmFL にあったが、1990 年代に 120cmFL へ小型化した。2000 年代は 120cm から 160cm の魚が多く、2010 年代には 130cm から 160cm の魚が多かった。

近年 5 年間の体長組成を Fig.2 に示す。漁獲のほとんどは 80 cm から 200 cm の範囲にある。2010 年に約 120 cm に見られるモードは 2013 年の約 150 cm へと毎年大型化していた。なお、日本はえ縄船からの放流魚の多くは小型魚と考えられ、体長組成の小型部分については放流の影響を受けていると思われる。

5. 漁船数と分布 Fleet size and distribution

ミナミマグロを漁獲した日本はえ縄船は、2014 年、2015 年共に 90 隻であった。使用鈎数とミナミマグロ漁獲尾数の地理的分布を、1965 年から最近年までのデータを用いて、5 度区画別に示す（Fig.3）。最近 5 年間について、年別の使用鈎数分布を Fig.4 に、ミナミマグロ漁獲尾数の分布を Fig.5 に示す。大きな違いは認められない。

6. 科学オブザーバプログラム Scientific observer program

2015 年にミナミマグロを対象とした操業許可を持つ 21 隻の日本はえ縄漁船へオブザーバを派遣し、ミナミマグロ主要漁場でのミナミマグロ操業を観察した。4～9 海区での調査カバー率は、隻数で 23.3%、使用鈎数で 18.1%、ミナミマグロ漁獲尾数で 18.0%であった。詳細は別文書

(CCSBT-ESC/1609/20) を参照されたい。

7. 他の関連情報 Other relevant information

【標識の回収】

2015 年 7 月以降に日本のはえ縄漁船から国際水研を通じて報告された再捕は、通常標識が 35 本 (25 個体分。CCSBT および NewSouthWales)、アーカイバルタグ (CSIRO) が 1 個体分であった。また、日本が曳縄調査で放流したアーカイバルタグのうち、9 個体が再捕、報告された。

【耳石収集活動および分析】

2015 年にオブザーバ活動にて 794 個体分の耳石を収集した。また、2015 年にはミナミマグロ 210 個体の年齢を査定し、2016 年のデータ交換においてデータを CCSBT 事務局へ提出した (CCSBT-ESC/1609/25)。

【調査死亡枠】

2016 年 1 月に曳縄調査を行い、2015 年 4 月から 2016 年 3 月までの期間における調査死亡は 566.3kg であった (CCSBT-ESC/1609/26)。2017 年曳縄調査のために、1.0 トンの調査死亡枠を申請する (CCSBT-ESC/1609/30)。

1. Introduction

This document is a review of the historic and current Japanese longline fisheries of Southern Bluefin tuna *Thunnus maccoyii* (SBT) according to the template for the annual review of national SBT fisheries for the Extended Scientific Committee.

Longline is the only method that Japanese commercial fleet has used to catch SBT. The fisheries started in 1952 in the tropical Eastern Indian Ocean (CCSBT statistical area 1 and 2). Back in those days, post-spawning adult SBT were caught as the bycatch of bigeye tuna and yellowfin tuna fishing. The quality of fish meat in this area was not good, and thus Japanese fishermen extended the fishing ground to the high latitude area. Japanese longline fleets reached the northeastern region of New Zealand (Area 5) in 1956, around the Tasman Sea (Area 4, 7) in 1961, Southern Indian Ocean (Area 8) in 1965 and around the off Cape Town (Area 9) in 1967. Number of Japanese vessels that caught SBT in the 1960s was estimated as about 300. Eastern Pacific (Area 12) and off Argentina (Area 10) where some SBT were caught were not established as SBT fishing grounds because of the lower fish density.

In the 1970s, as the increasing catches of small SBT and decreasing catches of adult SBT raised concerns on the stock condition, Japan had adopted the voluntary area-closures for its domestic longline fisheries since October 1971; The spawning ground was closed between December and March to protect migrating adults, and some fishing grounds was closed seasonally to protect small SBT (off Sydney in May-July; Great Australian Bight in October-March; off Cape Town in October-January). In addition, because Japanese fishermen began to target high-quality SBT, the number of fishing operation in Area 1 and Area 2 dropped drastically. Further, when Japanese vessels began using “deep tuna longline” in 1973-1974, considerable number of vessels changed their target from SBT to bigeye tuna.

In the early 1980s, SBT catches by Australian surface fisheries increased rapidly and significantly while Japanese longline catches decreased. In 1982, Japan, Australia, and New Zealand organized a voluntary trilateral management framework for SBT, and began to apply quotas to their fisheries in 1985. Japanese national allocation was 23,150 t in 1985, and decreased to 19,500 t, 8,800 t, and 6,065 t at the 1986, 1988, and 1989 trilateral meeting, respectively. After 1989, Japan adopted official area/time-closures to domestic longline fisheries to manage the Japanese SBT quota (Table 1). In 1994, the Convention for the Conservation of Southern Bluefin Tuna (CCSBT) came into force. Japan was applied 6,065 t as its national allocation in 1989-1997, and voluntarily maintained it as the self-regulation every year to 2003. Japanese allocation was 6,065 t in 2004-2006 also, but Japan set a quota of 4,275 t for 2006 because of 1,790 t of exceeds in 2005. The commission meeting in 2006 (CCSBT13) decided to reduce Japanese quota to 3,000 t in the next 5 years (2007-2011). Further reduction of the TAC in 2010-2011 was decided due to the lower stock status in 2009, and Japanese allocation resulted in 2200 t and 2600³ t, respectively. In the following years, allocation was 2,519 t in 2012, 2,703 t in 2013, 3,403 t in 2014, and 4,737 t in 2015⁴.

Area/time-closures in main fishing ground by the “Olympic system” had been used to manage the Japanese quota during 1990-2005. Under this management system, Fisheries Agency of Japan set the quota, number of

³ Allocation for each year includes annual transfer (139 t) from New Zealand. Refer to CCSBT-EC/1010/14 for more information.

⁴ The allocation does not include carry over from previous seasons.

CCSBT-ESC/1609/SBT Fisheries-Japan

fishing vessels operating, starting date for each of the three main fishing grounds beforehand, monitored the SBT catches of authorized vessels, and closed the fishing grounds before the quota was exhausted. In 2006, Japan adopted an individual quota (IQ) system for SBT fisheries, and abolished the area/time-closures at the same time. In addition, the catch monitoring tag was adopted to further strengthen domestic management system. As IQ for each vessel has been relatively small considering recent higher CPUE, Japanese vessels tend to consume all of their IQ by a small number of operations targeting SBT and to move out soon from the SBT fishing grounds in recent years. The details of operation pattern in 2015 are described in CCSBT-ESC/1609/22.

2. Catch and Effort

Catches and efforts for Japanese longline vessels by calendar year since 1965 to the most recent year are provided in Table 1 to Table 4 by CCSBT statistical area or month. Most of catches in recent years are brought from Area 4, Area 7, Area 8 and Area 9 and between April and September. Effort distribution showed similar trend, but the proportions of other Areas (e.g. Area 2) or months were larger than those of catch. This is due to CCSBT definition of effort data that counts all the efforts in any five degree square grid in which more than one SBT individual is caught.

Since Japanese usual product type is “GG (Gilled and Gutted, tail removed)”, the total SBT catch weight was produced using the conversion factors “1.15” from the processed weight. The total catch weight in 2015 was 4,130 t, and the total catch number was about 85 thousand. Note that the official statistic is based on the logbook. Until the data from logbook become available, the data from Real Time Monitoring Program (RTMP) are used temporally. There could be revision of the statistical values for a few recent years as logbook data are collected and processed. Some Japanese longliners release or discard some of their SBT hooked in order to use their limited IQ effectively. The number of released or discarded SBT was reported as 12,208 in 2015 through RTMP system. 11,181 SBT (91.6%) was live release and 1,027 SBT (8.4%) was dead discard.

3. Nominal CPUE

Nominal CPUE of SBT by Japanese longline vessels between 1965 and the most recent year are provided in Table 5 and Table 6 by CCSBT statistical area or month. CPUE was higher in Area 7, Area 8 and Area 9 than in other areas, in the period between April and November which is the fishing season of those areas.

4. Size composition

Since 1995 when all of authorized Japanese vessels targeting SBT joined the RTMP, they have measured fork length of all the SBT individuals and reported it immediately. Thus, Japan has been able to provide the size data of most of the SBT catch since 1995.

Catch-at-length is provided in Fig. 1 by decade. The length modes were around 150 cmFL in the 1960s to 1980s. It shifted to 120 cmFL in the 1990s. A large part of fish was between 120 cm and 160 cm in the 2000s and between 130 cm and 160 cm in the 2010s. Catch-at-length in the recent five years is provided in Fig. 2 by year. The most fish ranged between 80 cm and 200 cmFL. There was a progressive mode that located around 120 cm in 2010 and 150 cm in 2013. Note that small sized fish in length frequency may be affected by release and discards.

5. Fleet size and distribution

The total numbers of Japanese vessels that caught SBT was 90 in both of 2014 and 2015.

Geographical distribution of hooks used and SBT caught are provided in Fig. 3 for all the years since 1965 and in Fig. 4 and Fig. 5 for every year in the most recent five years in a resolution of five degree square. No large difference was observed in the distribution in the recent five years.

6. Scientific observer program

A total of 21 authorized Japanese SBT longline vessels were observed by the scientific observers in 2015. Observer coverage was 23.3% in terms of the number of vessels, 18.1% in terms of the number of hooks used, and 18.0% in terms of the number of SBT caught. The details of scientific observer activities are given in document CCSBT-ESC/1609/20.

7. Other relevant information

[Tag recovery]

Conventional tags from a total of 25 individuals (35 tags; CCSBT and New South Wales) and an archival tag released from CSIRO were recovered from Japanese longline vessels and reported from NRIFSF since July 2015. Archival tags released in the Japanese trolling survey were recovered from 9 individuals.

[Activities of otolith collection]

In 2015, SBT otoliths were collected through the scientific observer program from 794 individuals. In 2015, 210 SBT otoliths were analyzed for their ages and the data were submitted to the 2016 CCSBT data exchange process. The details are given in CCSBT-ESC/1609/25.

[Research mortality allowance]

As the trolling survey was carried out in 2016 January, there was 533.6kg of research mortality of SBT from April 2015 to March 2016 (CCSBT-ESC/1609/26). Research mortality allowance of 1.0 ton is requested for the trolling survey in 2016 (CCSBT-ESC/1609/30).

References

- Anonymous 2012 High-level Code of practice for Scientific Data Verification. Attachment 10 of Report of the Seventeenth Meeting of the Scientific Committee.
- Anonymous 2015. Proposal for RMA in the 2016 Japanese research. CCSBT-ESC/1509/34.
- Itoh, T. 2015. Change in operation pattern of apanese southern bluefin tuna longliners in 2014. CCSBT-ESC/1509/30.
- Yamasaki, I., T. Itoh, A. Hirai and K. Omote 2016. Activities of southern bluefin tuna otolith collection and age estimation and analysis of the age data by Japan in 2015. CCSBT-ESC/1609/25.
- Yamasaki, I., T. Itoh, K. Oshima and H. Matsunaga 2016. Report of Japanese scientific observer activities for southern bluefin tuna fishery in 2014 and 2015. CCSBT-ESC/1609/20.
- Ito T., Tsuda Y. 2016. Report of the piston-line trolling monitoring survey for the age-1 southern bluefin tuna recruitment index in 2015/2016. CCSBT-ESC/1609/26.

Table 1. Catch of southern bluefin tuna by Japanese longline by statistical area.

Catch is the number of southern bluefin tuna retained.

Year	Area1	Area2	Area3	Area4	Area5	Area6	Area7	Area8	Area9	Area10	Area11	Area12	Area14	Area15	All
1965	24,816	379,069		164,823	81,262	5,878	65,092	97	236	13	543		481	138	722,448
1966	19,836	225,102	560	185,200	59,419	4,867	149,359	31,937	262	0	6,506		620	0	683,668
1967	6,335	210,860	2	101,421	34,033	6,487	96,066	475,851	767	0	882		660	0	933,364
1968	7,196	18,785	31,953	80,776	30,112	18,377	273,389	267,676	95,762	5	1,168		1,800	4,303	831,302
1969	2,361	8,085	24,857	33,777	37,138	68,837	121,373	199,537	347,262	1,127	520		603	215	845,692
1970	1,210	10,801	1,121	35,002	15,982	65,921	206,644	105,502	256,058	5,110	349		596	464	704,760
1971	468	4,919	1,759	84,292	43,340	102,616	265,439	62,010	132,475	46	373		313	20	698,070
1972	98	256		100,216	70,591	80,343	232,617	47,785	270,377	757	134		27	134	803,335
1973	254	1,221	14	90,142	39,597	30,713	126,254	67,893	295,003	165	200		1	5	651,462
1974	904	3,821	43	70,003	40,634	36,524	164,840	60,570	294,666	94	312		431	229	673,071
1975	571	1,512	2,990	21,845	29,822	47,698	90,827	89,708	156,003		106		18	0	441,100
1976	116	43	5,573	16,155	60,566	96,246	137,257	149,449	168,845		133		3	46	634,432
1977	159	184	4,641	52,404	11,891	27,238	94,704	173,855	170,935		100		2	2	536,115
1978	45	807	11,993	56,932	3	10,275	102,429	44,437	224,521	96	111		0	6	451,655
1979	70	114	1,463	40,618	22,745	49,242	62,158	49,118	294,094	315	30		17	3	519,987
1980	165	3,172	106	51,686	54,541	68,495	112,756	76,635	215,759	2,273	34		0	138	585,760
1981	188	494		48,696	36,944	55,574	70,761	39,187	217,184	7,525	124		19	0	476,696
1982	231	27		25,249	20,395	28,957	27,972	46,307	177,121	4,368	5		2	0	330,634
1983	260	109		21,987	13,955	13,286	55,944	61,428	258,854	448	57		16	16	426,360
1984	934	401		9,408	10,371	16,046	62,621	92,035	172,950	11	78		134	4	364,993
1985	511	370		1,678	9,201	17,245	62,085	95,505	117,637	142	13		18	25	304,430
1986	143	257		5,573	7,693	11,872	19,095	87,950	79,488	354	27		14	80	212,546
1987	158	1,350		2,716	10,420	11,700	37,204	43,864	86,020	5	102		85	46	193,670
1988	86	279		4,244	5,874	5,609	32,299	31,907	84,449	0	95		103	0	164,945
1989	83	106		10,151	2,695	5,301	43,929	40,098	72,711	0	17		44	82	175,217
1990	58	324		10,244	4,977	6,049	43,964	30,847	42,169	77			224	46	138,979
1991	2	364		14,262	5,033	6,987	25,830	55,229	75,380	28	6		72	1	153,194
1992	3	503		27,637	2,757	6,243	15,481	18,925	75,952	19	24		104	5	147,653
1993	0	1,158		48,160	582	2,446	20,091	5,842	97,490	0	21		77	7	175,874
1994	0	1,063		30,743	19	1,343	12,438	31,126	55,330	14	30		144	14	132,264
1995	57	2,385		17,244	18	1,793	17,417	37,165	47,421	0	241		59	5	123,805
1996	10	1,010		17,483	0		10,906	37,206	53,260		38		195	1	120,109
1997	27	972		14,485	595	469	18,392	21,791	62,521		56		209	21	119,538
1998	17	376		15,164	787	1,113	12,666	35,654	63,556		25		326	0	129,684
1999	197	62		13,832	14	1,135	23,333	17,083	54,856		25		557	14	111,108
2000	388	431		12,673	3	57	20,915	32,799	45,606	0	23		326	0	113,221
2001	51	245		11,969	0	796	30,190	25,351	64,503	0	8		5,970	0	139,083
2002	100	1,682		19,921	0	691	22,879	9,059	64,410	60	6		435	0	119,243
2003	93	1,342		22,585	9	410	12,064	15,133	53,682	0	17		0	0	105,335
2004	0	2,247		15,148	3	376	4,637	24,969	58,284		5		17	0	105,686
2005	0	11,620		15,096	346	0	3,728	31,884	65,327		113		323	224	128,661
2006	0	10,025		7,049	14	1	4,197	12,277	44,229				202	0	77,994
2007	20	2,131		6,848	196	910	4,366	16,345	25,892		34		226	0	56,968
2008	46	197		3,815	50	1,395	6,480	13,089	23,249		13		236	9	48,579
2009	42	90		7,683	163	3,281	4,495	20,303	20,186	5	5		67	0	56,320
2010	183	1,302		4,507	1	0	9,169	5,740	25,203	13	37		57	0	46,212
2011	23	2,706		2,983	100	0	14,329	6,792	31,668	1	33		770	0	59,405
2012	105	656		1,323	11	0	14,772	6,684	28,055	0			148	0	51,754
2014	8	1,052		2,910	0	0	17,887	14,065	23,590			1	37	0	59,550
2015	19	1,739		4,937	30	0	20,468	19,631	38,360		1		55	4	85,244

Table 2. Catch of southern bluefin tuna by Japanese longline by month.

Catch is the number of southern bluefin tuna retained.

Year	Jan	Feb	Mar	Apr	May	Jun	Jul	Aug	Sep	Oct	Nov	Dec	All
1965	130,538	90,232	44,267	23,512	10,321	34,308	68,775	49,602	68,667	78,813	65,378	58,035	722,448
1966	70,323	47,696	39,105	33,870	21,581	56,039	104,970	53,021	48,250	66,016	75,713	67,084	683,668
1967	77,756	89,413	55,518	22,943	21,989	78,265	64,197	71,892	116,016	149,574	106,986	78,815	933,364
1968	65,797	56,547	75,917	41,884	56,963	51,256	92,132	97,427	78,868	58,835	76,659	79,017	831,302
1969	45,254	34,598	40,633	45,312	63,402	81,336	115,333	116,290	88,712	85,226	74,105	55,491	845,692
1970	55,761	68,617	56,757	61,958	56,540	61,060	81,478	75,997	46,647	26,136	63,713	50,096	704,760
1971	42,092	29,508	73,570	97,441	64,989	88,004	84,445	65,138	34,963	23,324	54,270	40,326	698,070
1972	37,414	32,184	57,094	78,542	93,319	122,793	122,477	109,614	69,982	23,680	28,350	27,886	803,335
1973	37,578	26,010	64,072	74,193	57,908	100,421	102,880	88,294	41,650	26,132	21,348	10,976	651,462
1974	15,394	24,631	59,810	72,237	66,071	83,947	129,592	91,384	49,592	29,226	28,694	22,493	673,071
1975	13,062	16,474	40,709	50,872	36,752	53,619	59,982	60,505	27,760	32,099	24,666	24,600	441,100
1976	25,714	31,587	56,608	75,969	60,060	83,369	83,611	69,208	43,233	43,089	33,236	28,748	634,432
1977	24,574	44,765	50,863	45,697	55,448	66,406	82,591	63,443	34,367	17,367	27,326	23,268	536,115
1978	17,524	18,317	33,492	67,967	56,034	64,673	66,689	43,840	30,730	15,721	21,609	15,059	451,655
1979	12,757	14,003	60,010	75,848	61,072	64,346	88,263	60,974	27,997	12,253	21,431	21,033	519,987
1980	20,480	14,895	23,924	53,313	68,927	95,609	118,944	66,445	29,474	21,372	33,324	39,053	585,760
1981	11,543	8,921	22,126	76,920	80,299	69,701	96,922	54,946	17,913	11,213	15,131	11,061	476,696
1982	3,519	3,076	9,238	28,798	49,376	57,957	66,314	43,599	25,131	16,035	14,694	12,897	330,634
1983	3,632	2,730	13,782	63,564	71,407	50,511	70,524	55,932	26,947	19,742	28,080	19,509	426,360
1984	8,695	19,507	17,020	43,827	38,354	44,751	61,904	50,301	28,166	17,038	19,913	15,517	364,993
1985	12,869	17,991	24,006	31,080	31,592	31,018	42,429	49,513	20,959	13,055	16,136	13,782	304,430
1986	1,621	268	4,065	17,040	23,618	25,426	35,682	40,409	23,911	14,362	16,562	9,582	212,546
1987	1,179	1,319	8,808	21,099	29,979	28,500	34,215	28,138	16,887	6,915	8,386	8,245	193,670
1988	775	338	3,968	18,369	18,362	27,321	28,833	28,324	17,113	4,127	9,191	8,224	164,945
1989	833	248	5,603	20,138	28,102	29,296	31,849	29,658	13,665	4,796	6,121	4,908	175,217
1990	45	212	612	26,315	33,577	24,143	33,843	19,105	508	195	155	269	138,979
1991	29	47	525	16,896	30,516	34,844	42,054	14,807	9,687	1,230	1,607	952	153,194
1992	6	0	533	13,099	22,893	28,981	53,325	15,241	7,558	3,426	2,230	361	147,653
1993	129	96	220	17,339	46,327	74,688	25,737	7,104	3,382	339	150	363	175,874
1994	188	76	857	1,049	33,486	54,595	9,919	9,511	19,645	2,679	235	24	132,264
1995	511	345	1,222	1,874	38,596	36,925	6,200	7,603	17,111	7,954	3,313	2,151	123,805
1996	374	4	27	35	27,026	28,174	23,562	2,739	14,370	10,311	10,775	2,712	120,109
1997	8	17	15	2,240	32,830	31,611	28,260	768	8,439	7,948	4,566	2,836	119,538
1998	2	8	0	2,735	22,699	31,262	29,913	6,415	13,691	9,650	11,322	1,987	129,684
1999	58	36	4	5,264	33,491	24,127	23,465	4,043	9,083	5,026	6,502	9	111,108
2000	9	2	4	3,498	22,385	23,525	25,553	367	14,548	9,990	7,327	6,013	113,221
2001	48	7	0	5,249	33,417	32,930	34,011	3,307	13,113	10,239	6,739	23	139,083
2002	2	1	115	4,892	40,798	43,737	17,430	1,779	6,551	2,650	1,194	94	119,243
2003	93	0	0	3,345	33,230	31,494	17,029	180	5,008	5,165	6,901	2,890	105,335
2004	109	8	0	1,975	21,489	23,634	29,010	5,355	3,656	4,267	9,829	6,354	105,686
2005	2,529	1,094	1	2,052	22,152	24,176	27,475	13,229	5,848	7,795	8,243	14,067	128,661
2006	5,358	2,486	62	0	8,584	9,213	13,365	20,654	9,293	3,656	2,412	2,911	77,994
2007	1,023	38	582	1,136	5,045	8,586	6,876	14,616	9,320	3,837	5,330	579	56,968
2008	70	113	587	3,958	8,103	8,228	8,826	8,649	5,092	1,719	2,274	960	48,579
2009	42	1	1	4,622	8,998	6,759	10,508	10,044	8,181	2,532	2,646	1,986	56,320
2010	643	293	2,051	12,346	11,916	7,186	4,220	4,932	496	269	1,842	18	46,212
2011	9	0	434	13,523	11,042	12,224	10,210	4,658	4,366	1,173	1,305	461	59,405
2012	26	13	1,829	15,484	8,012	9,210	7,182	7,015	2,493	101	379	10	51,754
2014	3	0	486	14,850	12,673	9,407	7,145	12,053	1,867	31	678	357	59,550
2015	2	0	338	18,660	20,581	16,503	7,721	15,414	4,770	703	399	153	85,244

Table 3. Effort of Japanese longline for southern bluefin tuna in the number of hooks used by statistical area.

Year	Area1	Area2	Area3	Area4	Area5	Area6	Area7	Area8	Area9	Area10	Area11	Area12	Area14	Area15	All
1965	7,685	21,381		7,543	3,111	282	2,531	21	740	77	3,002		2,957	4,774	54,104
1966	7,098	14,302	29	9,746	3,804	370	10,375	1,293	1,079	321	15,808		5,975	9,962	80,162
1967	6,240	15,569	5	5,654	3,657	730	6,806	28,132	1,134	71	8,279		7,091	2,305	85,672
1968	10,123	7,411	1,196	4,789	2,475	1,343	23,023	24,243	5,394	47	7,758		6,113	5,692	99,608
1969	3,554	2,521	1,069	4,398	4,662	7,575	14,984	19,863	23,355	912	5,388		6,046	1,096	95,425
1970	4,526	7,973	82	3,813	2,899	9,826	23,473	14,408	21,090	5,850	4,076		2,925	1,041	101,982
1971	2,407	10,109	53	8,096	6,985	15,336	33,963	13,628	14,187	652	1,990		3,065	1,211	111,681
1972	714	1,542		8,938	7,089	12,740	31,507	8,213	24,260	1,515	1,083		683	269	98,552
1973	1,618	3,048	7	10,136	3,266	8,383	26,126	14,535	32,974	448	3,010		956	696	105,203
1974	4,223	5,100	7	9,311	5,307	9,307	23,771	10,142	33,202	18	4,038		1,737	450	106,613
1975	5,513	4,665	322	3,656	3,765	9,200	19,208	18,324	27,491		1,905		966	972	95,986
1976	1,129	1,151	278	3,874	8,274	21,433	23,973	26,997	23,246		1,310		506	185	112,355
1977	698	1,119	160	2,299	2,689	15,031	16,629	30,469	20,010		434		112	78	89,729
1978	2,112	2,182	458	4,278	446	2,732	18,101	12,531	40,918	92	3,751		573	57	88,231
1979	1,109	1,558	64	5,220	4,711	13,446	17,727	13,719	49,196	160	1,555		1,663	203	110,330
1980	2,573	2,034	2	4,276	7,842	18,629	26,963	21,267	43,312	2,312	1,040		1,381	343	131,975
1981	2,716	2,464		6,052	8,235	18,115	18,993	13,197	46,166	6,109	1,574		2,483	246	126,349
1982	2,462	871		6,304	11,181	13,036	8,234	16,186	44,947	3,855	1,269		1,428	878	110,650
1983	3,531	2,232		7,174	8,060	7,702	14,689	23,007	46,399	548	1,381		1,017	543	116,283
1984	9,685	3,236		4,023	5,310	9,286	15,334	28,432	49,476	45	6,783		2,535	1,072	135,217
1985	5,059	5,550		3,461	4,865	7,285	18,585	36,375	41,261	227	1,659		2,681	917	127,924
1986	3,358	2,458		5,178	5,546	7,346	8,706	46,344	37,158	1,135	4,162		1,812	479	123,680
1987	1,938	5,389		5,515	8,603	8,337	17,535	32,240	32,889	72	7,467		1,314	755	122,057
1988	1,371	1,623		8,792	5,489	7,083	15,030	21,618	35,108	4	6,237		2,922	424	105,700
1989	1,343	1,513		9,267	2,823	5,204	13,127	23,593	35,416	18	2,741		2,371	1,587	99,002
1990	1,826	2,699		8,309	3,506	3,416	12,507	5,456	23,312	53			5,595	2,340	69,019
1991	788	10,575		6,301	5,494	6,542	5,530	8,839	26,217	189	3,163		7,832	3,056	84,527
1992	524	5,392		8,610	4,216	3,652	2,974	7,750	28,625	74	7,112		8,736	2,586	80,251
1993	342	14,490		12,514	545	2,109	2,482	1,904	28,305	92	10,499		5,820	2,463	81,565
1994	250	21,258		12,389	66	330	2,221	5,478	22,683	530	11,395		19,484	6,951	103,034
1995	1,862	32,469		10,789	95	699	3,059	11,972	21,314	23	41,262		16,736	6,192	146,472
1996	1,823	26,978		14,781	200		2,980	17,136	24,749		16,401		23,661	5,999	134,709
1997	2,286	22,061		13,674	122	164	6,269	15,064	26,686		13,551		23,585	2,753	126,215
1998	1,791	8,428		12,602	326	392	7,564	14,435	25,597		34,070		25,410	3,109	133,723
1999	3,258	8,683		6,665	568	491	10,627	8,109	21,913		18,224		22,072	5,254	105,863
2000	2,395	9,134		5,583	142	61	9,865	16,631	18,686	242	4,661		17,119	2,316	86,837
2001	3,819	18,889		4,826	457	214	11,952	12,473	22,916	118	15,528		15,493	2,970	109,656
2002	2,843	19,878		7,693	55	173	11,417	7,811	15,205	143	11,125		17,702	1,782	95,826
2003	1,395	4,825		10,025	305	245	6,092	8,492	17,811	165	15,715		17,498	4,692	87,258
2004	1,416	4,041		9,852	315	251	3,332	8,980	25,153		4,410		18,439	3,270	79,461
2005	654	6,699		10,612	788	34	3,526	9,774	28,896		10,372		16,970	1,521	89,846
2006	119	5,427		4,761	197	3	1,083	6,238	21,118				20,420	485	59,852
2007	900	4,050		2,574	895	552	1,631	9,221	10,088		1,779		12,571	517	44,779
2008	3,041	5,709		3,415	723	283	1,274	7,967	12,013		1,827		10,524	2,797	49,573
2009	3,683	5,539		3,466	877	718	856	8,238	6,507	1,321	2,540		6,645	555	40,945
2010	2,503	6,703		3,810	359	0	1,304	2,442	7,758	799	5,281		8,233	864	40,056
2011	621	4,249		4,077	1,637	0	1,986	2,801	7,252	909	2,033		12,695	528	38,788
2012	356	4,785		3,379	1,490	0	2,452	2,608	6,149	23			10,986	4,822	37,049
2014	749	4,695		2,003	760	0	2,770	6,200	4,311			3,160	7,713	2,342	34,703
2015	230	3,542		1,395	460	0	3,000	6,030	5,078			171	4,108	1,779	25,792

Unit is 1000 hooks.

Table 4. Effort of Japanese longline for southern bluefin tuna in the number of hooks used by month.

Year	Jan	Feb	Mar	Apr	May	Jun	Jul	Aug	Sep	Oct	Nov	Dec	All
1965	6,369	4,890	3,272	1,488	2,363	4,835	5,422	3,834	4,820	7,017	5,857	3,936	54,104
1966	4,851	4,146	3,528	3,818	4,615	7,333	10,316	10,079	7,707	7,658	7,844	8,265	80,162
1967	6,765	6,455	5,078	4,003	5,451	6,842	9,427	8,220	9,087	8,856	7,415	8,072	85,672
1968	9,122	7,659	7,166	6,501	8,031	8,037	9,421	10,295	9,362	8,550	7,395	8,071	99,608
1969	6,964	5,424	5,673	5,232	8,322	9,327	11,405	11,552	9,493	8,721	7,216	6,095	95,425
1970	6,293	7,313	8,572	8,860	10,233	10,080	9,679	9,003	8,567	7,652	8,243	7,487	101,982
1971	9,143	8,705	10,260	11,311	11,836	12,441	10,579	9,621	6,720	6,535	7,998	6,532	111,681
1972	6,980	7,267	8,745	9,312	10,554	10,711	10,359	8,943	8,075	5,633	6,246	5,727	98,552
1973	8,903	7,493	9,598	11,317	10,915	11,187	9,813	9,523	8,274	7,644	6,333	4,204	105,203
1974	6,886	6,809	9,948	11,449	11,699	11,286	11,643	9,833	8,823	7,130	5,903	5,203	106,613
1975	5,858	6,473	9,031	9,461	9,078	9,882	8,944	9,539	7,556	7,078	6,242	6,844	95,986
1976	6,543	7,631	10,834	12,307	11,216	11,505	10,679	9,376	9,743	8,317	7,212	6,993	112,355
1977	6,841	6,788	9,402	9,315	8,516	8,879	8,023	8,651	7,443	5,587	5,747	4,539	89,729
1978	4,763	5,621	8,024	9,153	9,370	10,128	10,060	9,617	7,612	4,851	5,101	3,930	88,231
1979	4,699	4,821	10,605	13,129	13,573	13,767	12,991	10,375	8,721	5,800	6,266	5,584	110,330
1980	8,093	6,140	9,792	13,201	14,808	15,853	15,466	10,658	9,256	7,846	9,270	11,591	131,975
1981	5,366	6,566	11,675	15,072	16,749	17,051	16,242	11,447	7,437	6,290	7,067	5,386	126,349
1982	3,654	3,947	7,126	10,338	15,307	15,940	15,944	12,689	8,532	6,039	6,154	4,979	110,650
1983	2,847	3,088	5,264	10,686	15,421	15,172	15,000	14,124	10,794	8,443	8,130	7,314	116,283
1984	5,214	5,557	7,555	13,935	15,952	17,188	19,591	13,816	11,000	9,292	9,237	6,882	135,217
1985	6,189	3,313	6,024	12,040	14,483	16,343	17,211	16,208	10,782	8,229	8,877	8,225	127,924
1986	4,423	2,852	4,267	10,922	14,756	15,466	15,757	14,566	12,327	10,658	9,425	8,259	123,680
1987	4,865	3,185	5,068	9,539	13,743	16,224	15,390	18,752	12,454	9,064	7,925	5,847	122,057
1988	1,861	1,764	3,504	10,333	13,885	17,686	15,240	14,815	10,343	4,774	5,740	5,754	105,700
1989	1,507	766	3,108	9,153	14,448	15,050	15,013	13,122	9,465	5,925	6,861	4,584	99,002
1990	1,444	816	1,893	9,398	12,650	13,716	14,781	9,901	2,395	1,052	430	542	69,019
1991	763	717	2,730	9,065	12,888	13,775	15,668	10,681	7,765	4,499	3,762	2,215	84,527
1992	743	880	3,518	8,744	11,241	14,423	13,449	9,519	5,611	4,228	4,164	3,732	80,251
1993	2,564	841	2,331	9,078	11,737	13,152	11,024	8,980	7,493	6,349	4,066	3,951	81,565
1994	2,474	1,508	6,704	11,066	14,021	14,061	12,116	10,951	9,519	6,647	6,398	7,568	103,034
1995	6,903	6,708	10,951	13,920	18,250	17,267	13,932	14,208	13,368	10,962	10,111	9,891	146,472
1996	4,125	3,995	10,014	14,727	18,819	18,197	15,362	11,632	11,380	9,871	9,769	6,817	134,709
1997	2,913	2,288	6,894	12,228	18,847	17,483	15,857	13,274	12,304	10,447	8,837	4,842	126,215
1998	2,961	4,320	8,574	11,785	17,283	19,106	16,149	9,448	11,921	13,380	11,853	6,943	133,723
1999	3,350	3,590	7,465	11,351	17,060	14,174	12,794	7,163	9,713	8,799	6,852	3,552	105,863
2000	2,092	1,647	3,515	7,505	12,746	11,678	9,956	6,805	9,054	8,336	7,439	6,064	86,837
2001	3,070	3,516	4,888	8,888	15,011	15,007	13,036	12,566	11,449	9,052	8,465	4,710	109,656
2002	3,008	2,170	6,821	9,185	13,535	12,736	9,083	13,332	10,193	7,680	5,231	2,852	95,826
2003	3,054	2,717	5,589	8,916	13,507	13,395	9,932	7,076	6,892	5,359	6,251	4,570	87,258
2004	1,423	1,033	3,336	8,100	11,497	12,572	12,503	7,871	8,346	5,740	3,767	3,275	79,461
2005	2,216	1,688	3,332	8,039	12,988	13,329	13,332	9,888	9,685	7,121	4,527	3,701	89,846
2006	4,423	3,282	2,003	2,917	7,396	8,092	8,525	7,663	4,930	2,915	3,967	3,739	59,852
2007	3,318	2,618	1,433	1,075	3,028	5,859	6,251	6,855	5,490	3,252	3,594	2,006	44,779
2008	3,126	2,488	1,420	2,477	4,299	6,858	7,446	7,113	4,881	3,561	2,912	2,992	49,573
2009	3,349	2,010	1,338	2,192	4,050	5,115	5,246	6,601	5,423	2,211	1,701	1,707	40,945
2010	2,701	2,196	2,464	3,969	5,534	6,491	5,052	3,915	2,407	1,807	1,852	1,670	40,056
2011	1,972	2,173	2,672	3,705	5,382	5,177	5,055	3,988	3,276	2,134	1,920	1,335	38,788
2012	1,573	1,784	2,298	4,650	5,007	5,125	4,874	4,987	3,470	2,039	590	651	37,049
2014	1,683	1,256	1,317	4,567	5,116	5,006	5,162	3,774	1,435	1,301	1,993	2,094	34,703
2015	903	884	1,498	4,465	4,316	4,680	3,947	3,712	1,082	136	88	80	25,792

Unit is 1000 hooks.

Table 5. Nominal CPUE of Japanese longline in number of southern bluefin tuna per 1000 hooks by statistical area.

Year	Area1	Area2	Area3	Area4	Area5	Area6	Area7	Area8	Area9	Area10	Area11	Area12	Area14	Area15	All
1965	3.23	17.73		21.85	26.12	20.83	25.72	4.52	0.32	0.17	0.18		0.16	0.03	13.35
1966	2.79	15.74	19.06	19	15.62	13.15	14.4	24.7	0.24	0	0.41		0.1	0	8.53
1967	1.02	13.54	0.41	17.94	9.31	8.88	14.12	16.91	0.68	0	0.11		0.09	0	10.89
1968	0.71	2.53	26.71	16.87	12.17	13.69	11.87	11.04	17.75	0.11	0.15		0.29	0.76	8.35
1969	0.66	3.21	23.26	7.68	7.97	9.09	8.1	10.05	14.87	1.24	0.1		0.1	0.2	8.86
1970	0.27	1.35	13.72	9.18	5.51	6.71	8.8	7.32	12.14	0.87	0.09		0.2	0.45	6.91
1971	0.19	0.49	32.98	10.41	6.2	6.69	7.82	4.55	9.34	0.07	0.19		0.1	0.02	6.25
1972	0.14	0.17		11.21	9.96	6.31	7.38	5.82	11.15	0.5	0.12		0.04	0.5	8.15
1973	0.16	0.4	1.92	8.89	12.12	3.66	4.83	4.67	8.95	0.37	0.07		0	0.01	6.19
1974	0.21	0.75	5.75	7.52	7.66	3.92	6.93	5.97	8.88	5.24	0.08		0.25	0.51	6.31
1975	0.1	0.32	9.29	5.97	7.92	5.18	4.73	4.9	5.67		0.06		0.02	0	4.6
1976	0.1	0.04	20.06	4.17	7.32	4.49	5.73	5.54	7.26		0.1		0.01	0.25	5.65
1977	0.23	0.16	28.99	22.79	4.42	1.81	5.7	5.71	8.54		0.23		0.02	0.03	5.97
1978	0.02	0.37	26.18	13.31	0.01	3.76	5.66	3.55	5.49	1.04	0.03		0	0.1	5.12
1979	0.06	0.07	22.86	7.78	4.83	3.66	3.51	3.58	5.98	1.97	0.02		0.01	0.01	4.71
1980	0.06	1.56	49.3	12.09	6.96	3.68	4.18	3.6	4.98	0.98	0.03		0	0.4	4.44
1981	0.07	0.2		8.05	4.49	3.07	3.73	2.97	4.7	1.23	0.08		0.01	0	3.77
1982	0.09	0.03		4	1.82	2.22	3.4	2.86	3.94	1.13	0		0	0	2.99
1983	0.07	0.05		3.06	1.73	1.72	3.81	2.67	5.58	0.82	0.04		0.02	0.03	3.67
1984	0.1	0.12		2.34	1.95	1.73	4.08	3.24	3.5	0.24	0.01		0.05	0	2.7
1985	0.1	0.07		0.48	1.89	2.37	3.34	2.63	2.85	0.62	0.01		0.01	0.03	2.38
1986	0.04	0.1		1.08	1.39	1.62	2.19	1.9	2.14	0.31	0.01		0.01	0.17	1.72
1987	0.08	0.25		0.49	1.21	1.4	2.12	1.36	2.62	0.07	0.01		0.06	0.06	1.59
1988	0.06	0.17		0.48	1.07	0.79	2.15	1.48	2.41	0	0.02		0.04	0	1.56
1989	0.06	0.07		1.1	0.95	1.02	3.35	1.7	2.05	0	0.01		0.02	0.05	1.77
1990	0.03	0.12		1.23	1.42	1.77	3.52	5.65	1.81	1.46			0.04	0.02	2.01
1991	0	0.03		2.26	0.92	1.07	4.67	2.85	2.88	0.15	0		0.01	0	1.81
1992	0.01	0.09		3.21	0.65	1.71	5.2	2.44	2.65	0.26	0		0.01	0	1.84
1993	0	0.08		3.85	1.07	1.16	8.09	3.07	3.44	0	0		0.01	0	2.16
1994	0	0.05		2.48	0.29	4.07	5.6	5.68	2.44	0.03	0		0.01	0	1.28
1995	0.03	0.07		1.6	0.19	2.56	5.69	3.1	2.22	0	0.01		0	0	0.85
1996	0.01	0.04		1.18	0		3.66	2.17	2.15		0		0.01	0	0.89
1997	0.01	0.04		1.06	4.88	2.86	2.93	1.45	2.34		0		0.01	0.01	0.95
1998	0.01	0.04		1.2	2.41	2.84	1.67	2.47	2.48		0		0.01	0	0.97
1999	0.06	0.01		2.08	0.02	2.31	2.2	2.11	2.5		0		0.03	0	1.05
2000	0.16	0.05		2.27	0.02	0.94	2.12	1.97	2.44	0	0		0.02	0	1.3
2001	0.01	0.01		2.48	0	3.71	2.53	2.03	2.81	0	0		0.39	0	1.27
2002	0.04	0.08		2.59	0	3.99	2	1.16	4.24	0.42	0		0.02	0	1.24
2003	0.07	0.28		2.25	0.03	1.68	1.98	1.78	3.01	0	0		0	0	1.21
2004	0	0.56		1.54	0.01	1.5	1.39	2.78	2.32		0		0	0	1.33
2005	0	1.73		1.42	0.44	0	1.06	3.26	2.26		0.01		0.02	0.15	1.43
2006	0	1.85		1.48	0.07	0.3	3.87	1.97	2.09				0.01	0	1.3
2007	0.02	0.53		2.66	0.22	1.65	2.68	1.77	2.57		0.02		0.02	0	1.27
2008	0.02	0.03		1.12	0.07	4.92	5.09	1.64	1.94		0.01		0.02	0	0.98
2009	0.01	0.02		2.22	0.19	4.57	5.25	2.46	3.1	0	0		0.01	0	1.38
2010	0.07	0.19		1.18	0		7.03	2.35	3.25	0.02	0.01		0.01	0	1.15
2011	0.04	0.64		0.73	0.06		7.21	2.42	4.37	0	0.02		0.06	0	1.53
2012	0.3	0.14		0.39	0.01		6.03	2.56	4.56	0			0.01	0	1.4
2014	0.01	0.22		1.45	0		6.46	2.27	5.47			0	0	0	1.72
2015	0.08	0.49		3.54	0.07		6.82	3.26	7.55			0.01	0.01	0	3.31

Table 6. Nominal CPUE of Japanese longline in number of southern bluefin tuna per 1000 hooks by month.

Year	Jan	Feb	Mar	Apr	May	Jun	Jul	Aug	Sep	Oct	Nov	Dec	All
1965	20.49	18.45	13.53	15.8	4.37	7.1	12.68	12.94	14.24	11.23	11.16	14.75	13.35
1966	14.5	11.5	11.08	8.87	4.68	7.64	10.18	5.26	6.26	8.62	9.65	8.12	8.53
1967	11.49	13.85	10.93	5.73	4.03	11.44	6.81	8.75	12.77	16.89	14.43	9.76	10.89
1968	7.21	7.38	10.59	6.44	7.09	6.38	9.78	9.46	8.42	6.88	10.37	9.79	8.35
1969	6.5	6.38	7.16	8.66	7.62	8.72	10.11	10.07	9.34	9.77	10.27	9.1	8.86
1970	8.86	9.38	6.62	6.99	5.53	6.06	8.42	8.44	5.45	3.42	7.73	6.69	6.91
1971	4.6	3.39	7.17	8.61	5.49	7.07	7.98	6.77	5.2	3.57	6.79	6.17	6.25
1972	5.36	4.43	6.53	8.43	8.84	11.46	11.82	12.26	8.67	4.2	4.54	4.87	8.15
1973	4.22	3.47	6.68	6.56	5.31	8.98	10.48	9.27	5.03	3.42	3.37	2.61	6.19
1974	2.24	3.62	6.01	6.31	5.65	7.44	11.13	9.29	5.62	4.1	4.86	4.32	6.31
1975	2.23	2.55	4.51	5.38	4.05	5.43	6.71	6.34	3.67	4.53	3.95	3.59	4.6
1976	3.93	4.14	5.23	6.17	5.35	7.25	7.83	7.38	4.44	5.18	4.61	4.11	5.65
1977	3.59	6.6	5.41	4.91	6.51	7.48	10.29	7.33	4.62	3.11	4.76	5.13	5.97
1978	3.68	3.26	4.17	7.43	5.98	6.39	6.63	4.56	4.04	3.24	4.24	3.83	5.12
1979	2.71	2.9	5.66	5.78	4.5	4.67	6.79	5.88	3.21	2.11	3.42	3.77	4.71
1980	2.53	2.43	2.44	4.04	4.65	6.03	7.69	6.23	3.18	2.72	3.59	3.37	4.44
1981	2.15	1.36	1.9	5.1	4.79	4.09	5.97	4.8	2.41	1.78	2.14	2.05	3.77
1982	0.96	0.78	1.3	2.79	3.23	3.64	4.16	3.44	2.95	2.66	2.39	2.59	2.99
1983	1.28	0.88	2.62	5.95	4.63	3.33	4.7	3.96	2.5	2.34	3.45	2.67	3.67
1984	1.67	3.51	2.25	3.15	2.4	2.6	3.16	3.64	2.56	1.83	2.16	2.25	2.7
1985	2.08	5.43	3.99	2.58	2.18	1.9	2.47	3.05	1.94	1.59	1.82	1.68	2.38
1986	0.37	0.09	0.95	1.56	1.6	1.64	2.26	2.77	1.94	1.35	1.76	1.16	1.72
1987	0.24	0.41	1.74	2.21	2.18	1.76	2.22	1.5	1.36	0.76	1.06	1.41	1.59
1988	0.42	0.19	1.13	1.78	1.32	1.54	1.89	1.91	1.65	0.86	1.6	1.43	1.56
1989	0.55	0.32	1.8	2.2	1.95	1.95	2.12	2.26	1.44	0.81	0.89	1.07	1.77
1990	0.03	0.26	0.32	2.8	2.65	1.76	2.29	1.93	0.21	0.19	0.36	0.5	2.01
1991	0.04	0.07	0.19	1.86	2.37	2.53	2.68	1.39	1.25	0.27	0.43	0.43	1.81
1992	0.01	0	0.15	1.5	2.04	2.01	3.97	1.6	1.35	0.81	0.54	0.1	1.84
1993	0.05	0.11	0.09	1.91	3.95	5.68	2.33	0.79	0.45	0.05	0.04	0.09	2.16
1994	0.08	0.05	0.13	0.09	2.39	3.88	0.82	0.87	2.06	0.4	0.04	0	1.28
1995	0.07	0.05	0.11	0.13	2.11	2.14	0.45	0.54	1.28	0.73	0.33	0.22	0.85
1996	0.09	0	0	0	1.44	1.55	1.53	0.24	1.26	1.04	1.1	0.4	0.89
1997	0	0.01	0	0.18	1.74	1.81	1.78	0.06	0.69	0.76	0.52	0.59	0.95
1998	0	0	0	0.23	1.31	1.64	1.85	0.68	1.15	0.72	0.96	0.29	0.97
1999	0.02	0.01	0	0.46	1.96	1.7	1.83	0.56	0.94	0.57	0.95	0	1.05
2000	0	0	0	0.47	1.76	2.01	2.57	0.05	1.61	1.2	0.98	0.99	1.3
2001	0.02	0	0	0.59	2.23	2.19	2.61	0.26	1.15	1.13	0.8	0	1.27
2002	0	0	0.02	0.53	3.01	3.43	1.92	0.13	0.64	0.35	0.23	0.03	1.24
2003	0.03	0	0	0.38	2.46	2.35	1.71	0.03	0.73	0.96	1.1	0.63	1.21
2004	0.08	0.01	0	0.24	1.87	1.88	2.32	0.68	0.44	0.74	2.61	1.94	1.33
2005	1.14	0.65	0	0.26	1.71	1.81	2.06	1.34	0.6	1.09	1.82	3.8	1.43
2006	1.21	0.76	0.03	0	1.16	1.14	1.57	2.7	1.88	1.25	0.61	0.78	1.3
2007	0.31	0.01	0.41	1.06	1.67	1.47	1.1	2.13	1.7	1.18	1.48	0.29	1.27
2008	0.02	0.05	0.41	1.6	1.88	1.2	1.19	1.22	1.04	0.48	0.78	0.32	0.98
2009	0.01	0	0	2.11	2.22	1.32	2	1.52	1.51	1.15	1.56	1.16	1.38
2010	0.24	0.13	0.83	3.11	2.15	1.11	0.84	1.26	0.21	0.15	0.99	0.01	1.15
2011	0	0	0.16	3.65	2.05	2.36	2.02	1.17	1.33	0.55	0.68	0.35	1.53
2012	0.02	0.01	0.8	3.33	1.6	1.8	1.47	1.41	0.72	0.05	0.64	0.02	1.4
2014	0	0	0.37	3.25	2.48	1.88	1.38	3.19	1.30	0.02	0.34	0.17	1.72
2015	0	0	0.23	4.18	4.77	3.53	1.96	4.15	4.41	5.17	4.53	1.91	3.31

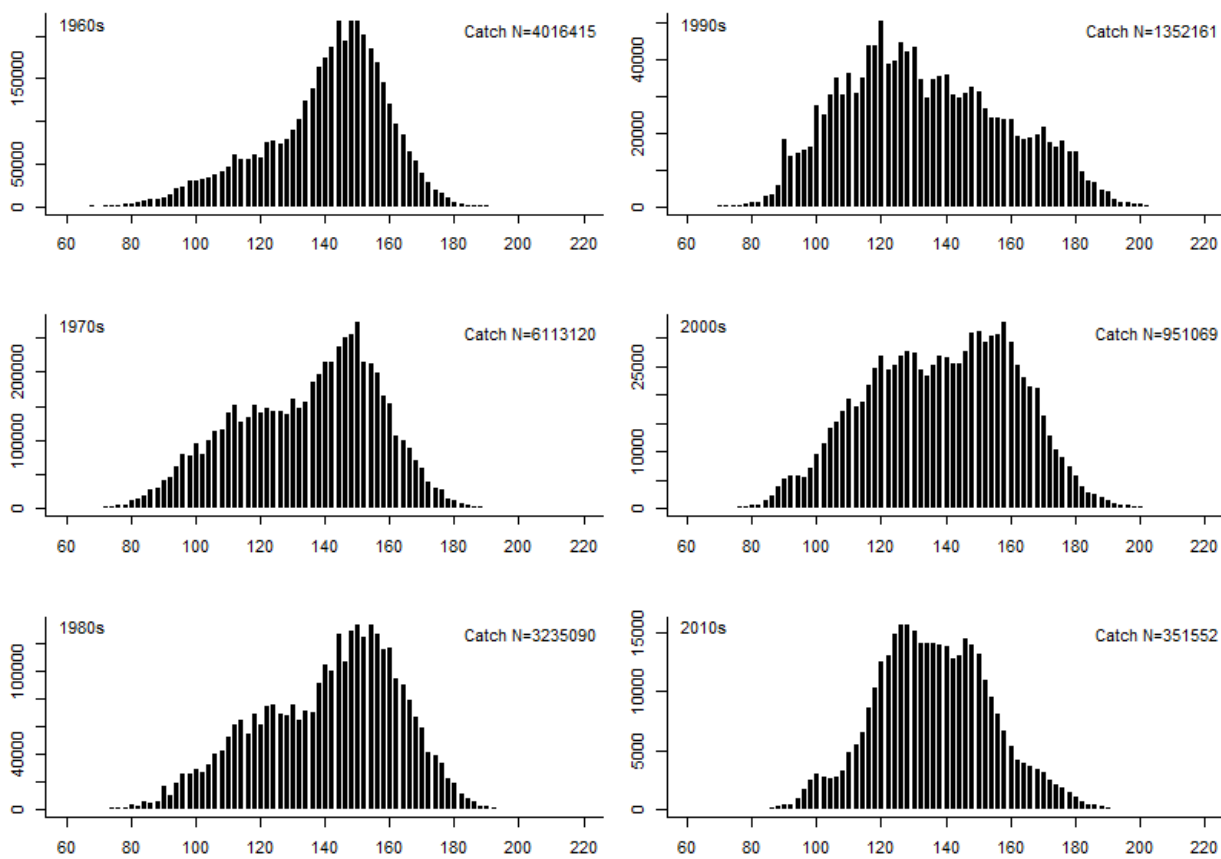


Fig. 1. Length frequency of southern bluefin tuna caught by Japanese longline in each decade.

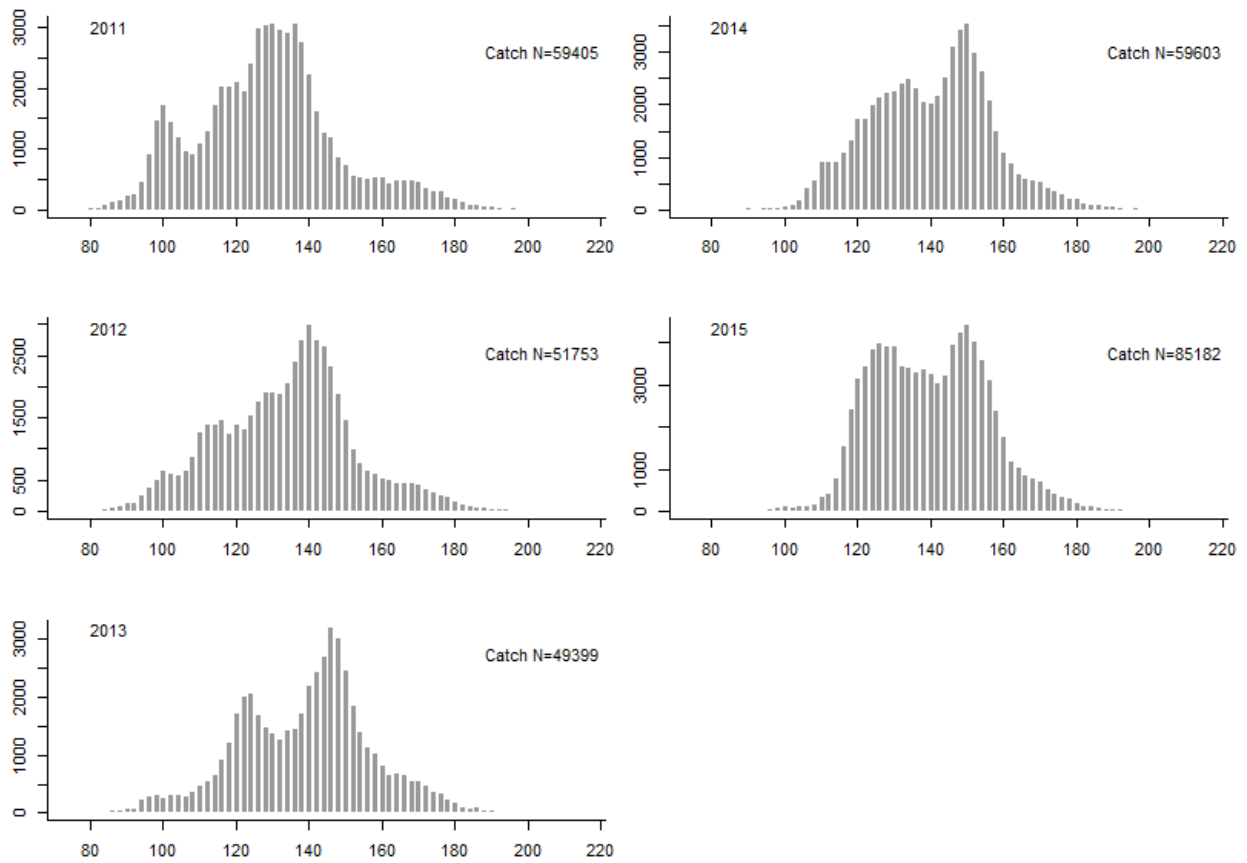


Fig. 2. Length frequency of southern bluefin tuna caught by Japanese longline in each of last five years.

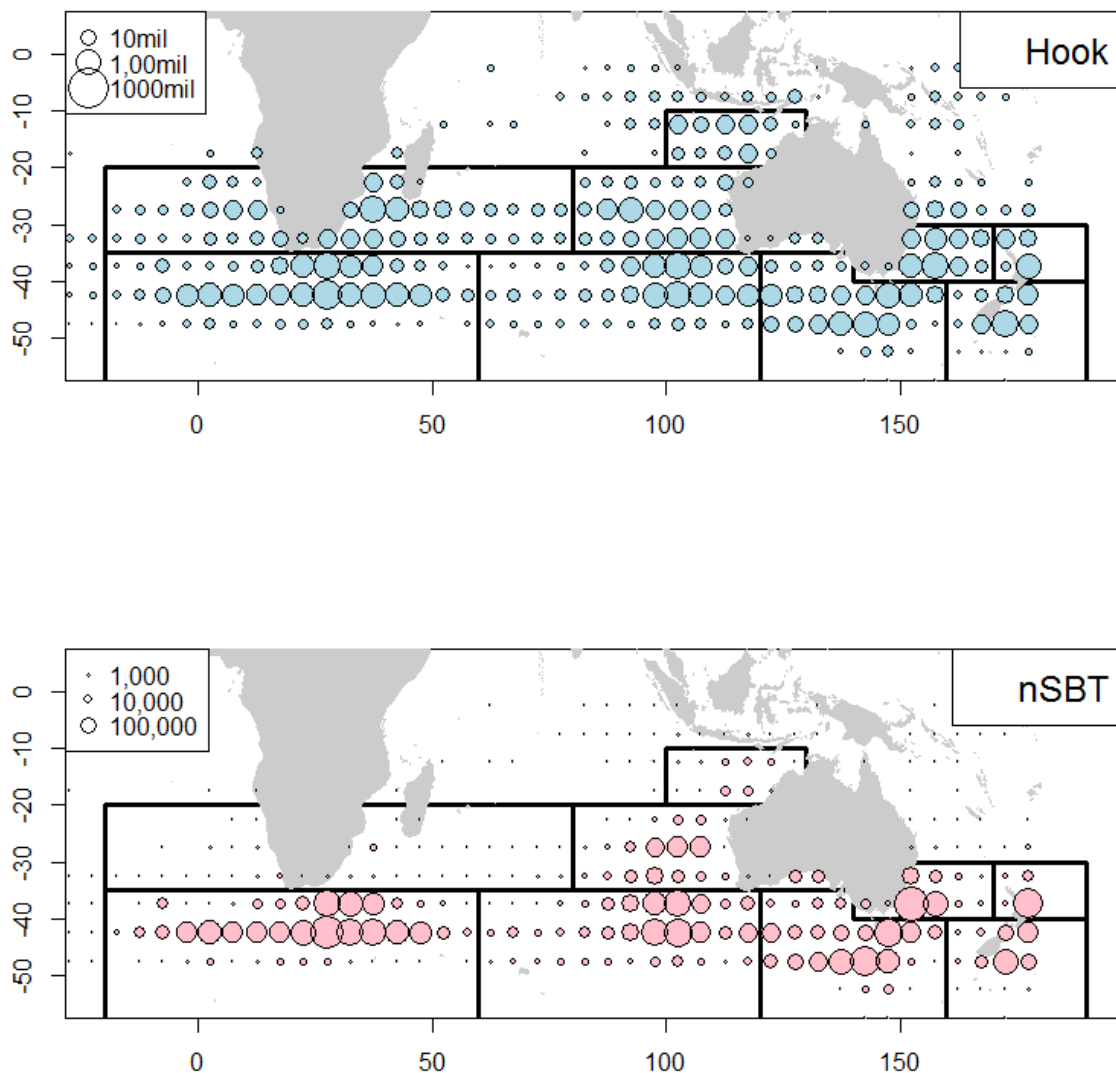


Fig. 3. Distribution of the hook of hooks used (upper panel) and the number of southern bluefin tuna caught (lower panel) by Japanese longline.

Lines drawn are boundary of CCSBT statistical area.

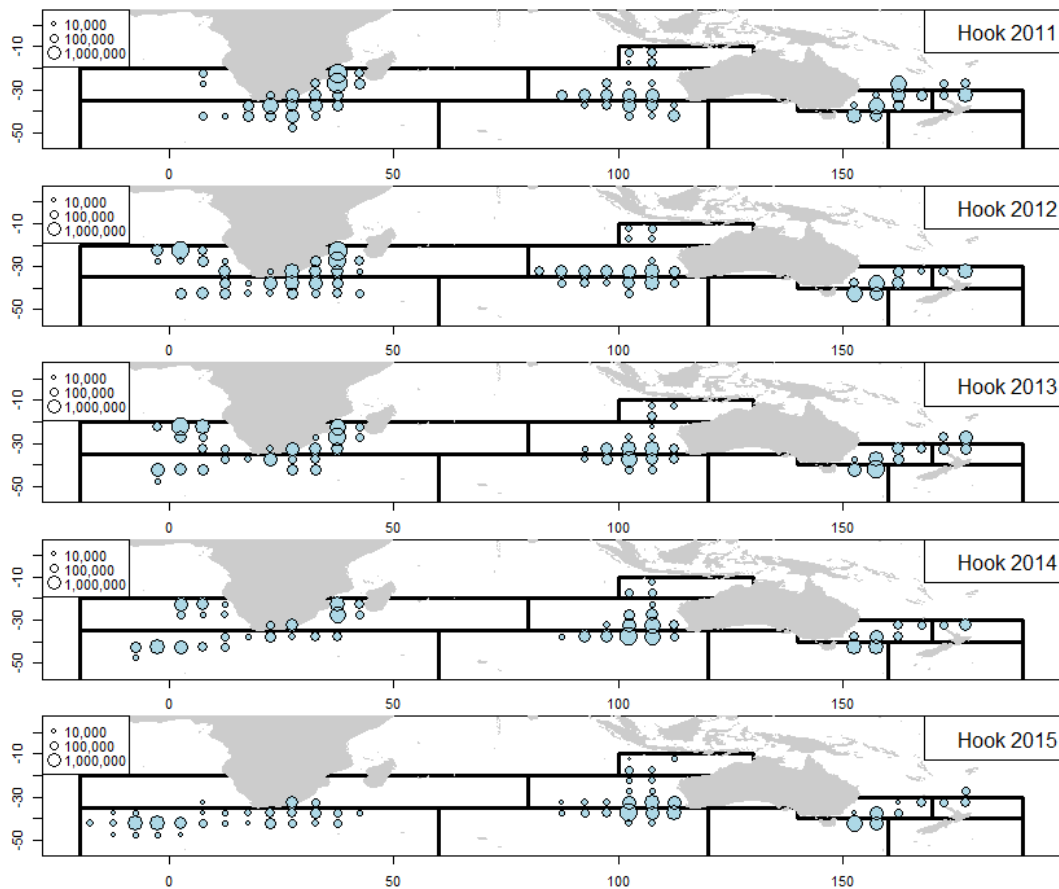


Fig. 4. Distribution of the number of hooks used for southern bluefin tuna by Japanese longline in each of last five years.

Lines drawn are boundary of CCSBT statistical area.

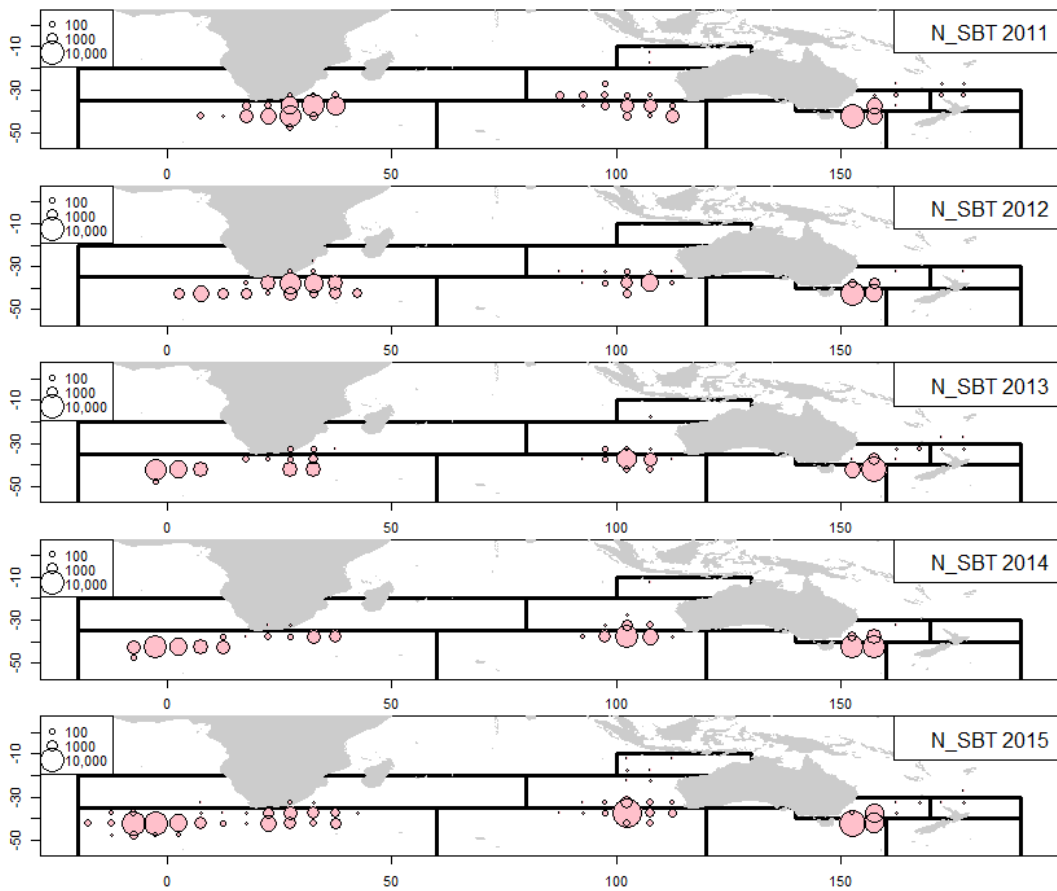


Fig. 5. Distribution of the number of southern bluefin tuna caught by Japanese longline in each of last five years.

Lines drawn are boundary of CCSBT statistical area.