

## **Weight frequency analysis of farmed SBT**

### **1. Individual fish weight frequency at 40 fish sampling**

Data source: CCSBT Data exchange (CCSBT web site)

File name: AUS 2005 CatchAtSize data

AUS 2004 CatchAtSize data (revised)

AUS 2003 CatchAtSize data (revised)

Conversion equation:  $\text{Weight} = 0.0000313088 * \text{Length} ^ 2.9058$

### **2. Individual fish weight frequency at harvest**

Data source: Packing lists information from Japanese Buyers

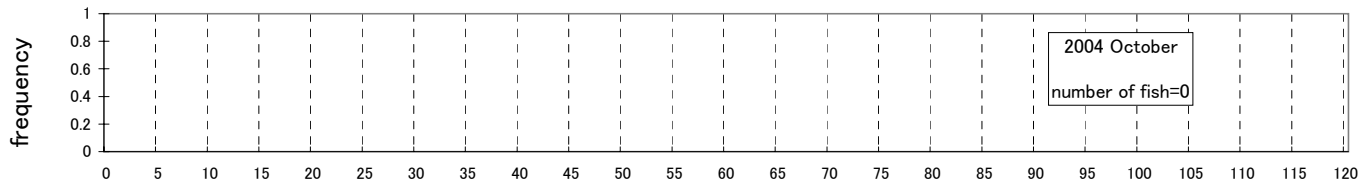
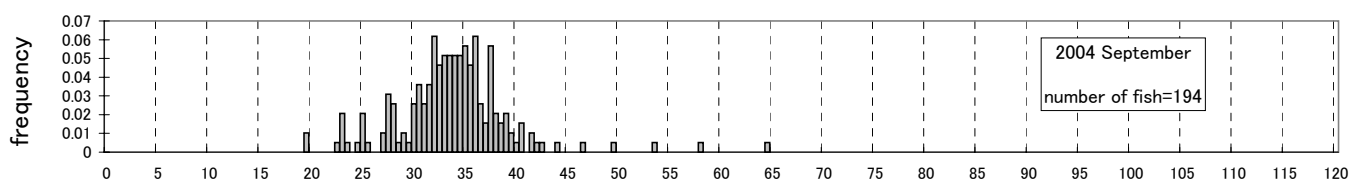
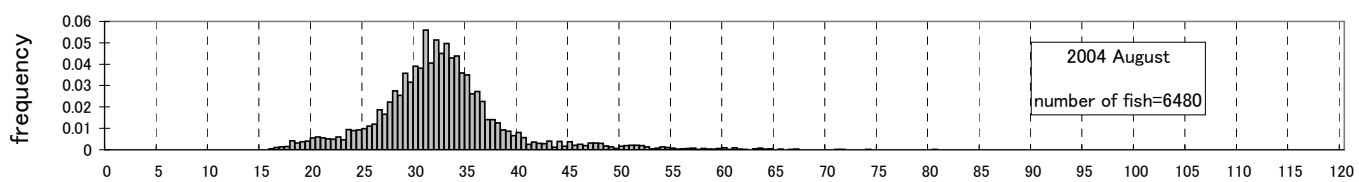
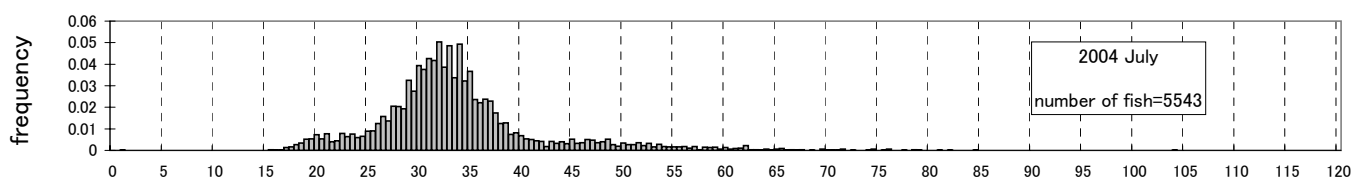
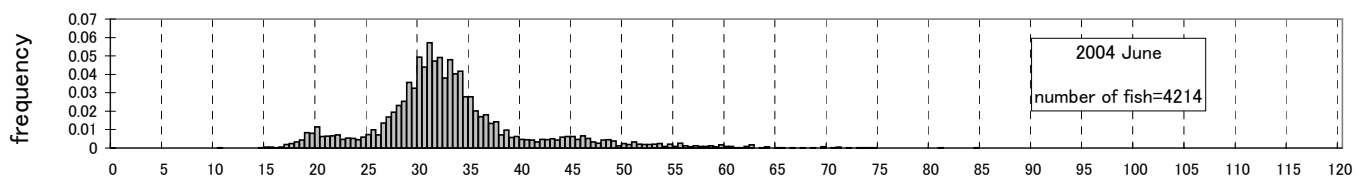
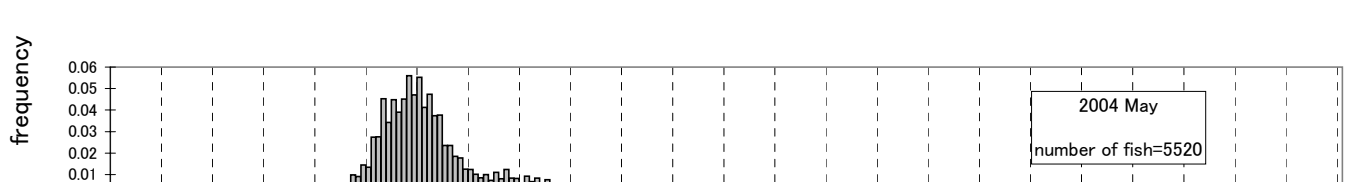
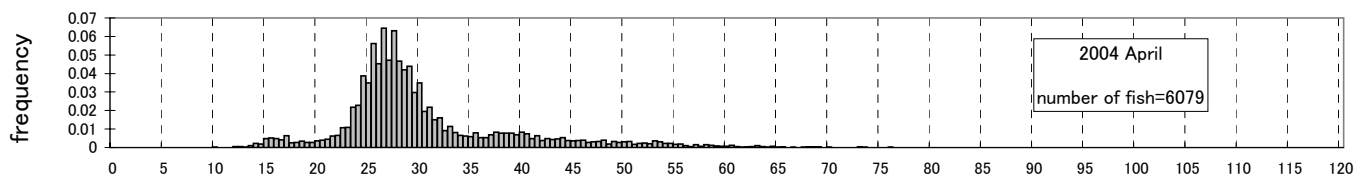
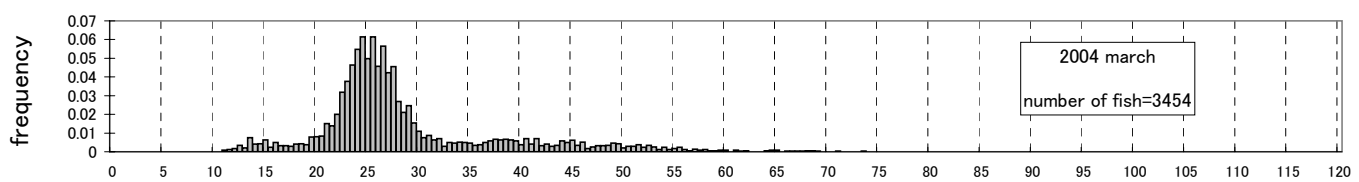
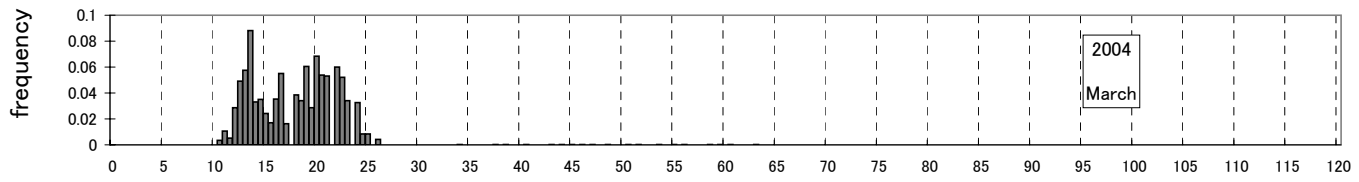
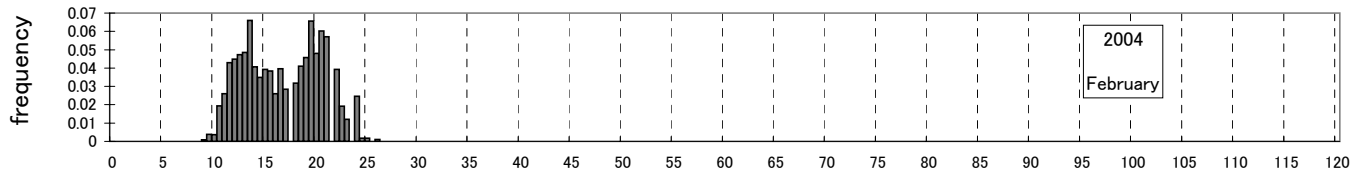
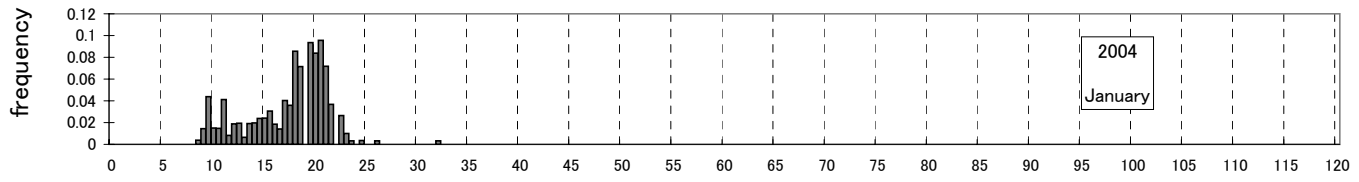
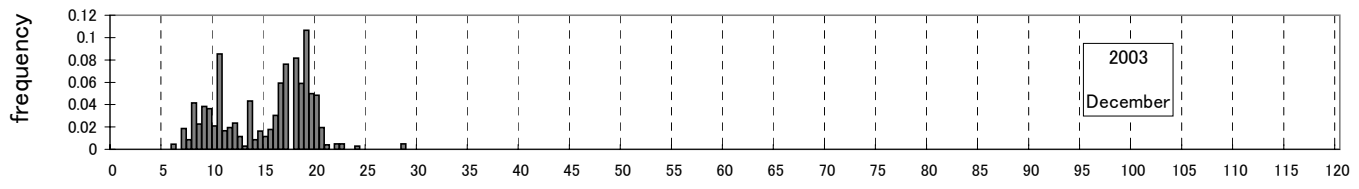
Year: 2005 harvest season

2004 harvest season

Processed Type: Fresh GG (Conversion: Whole weight = 1.12 \* GG weight + 1 )

weight frequency analysis 2003/2004 season

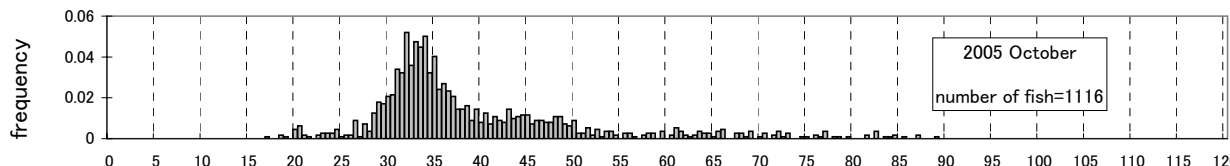
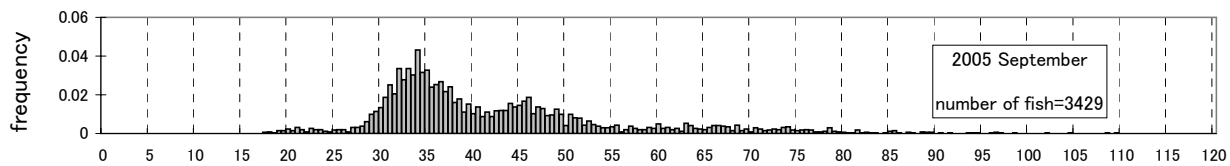
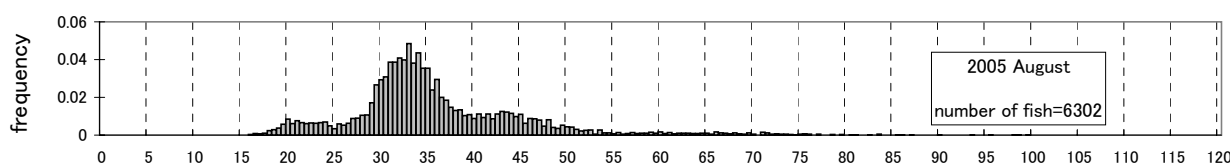
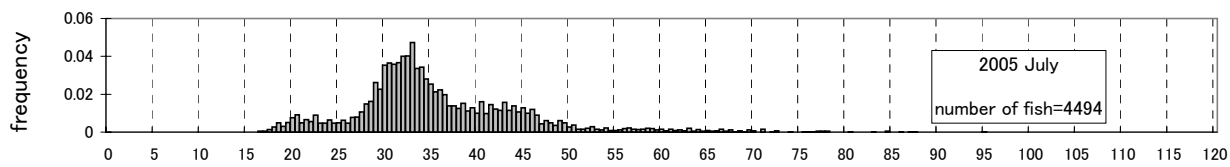
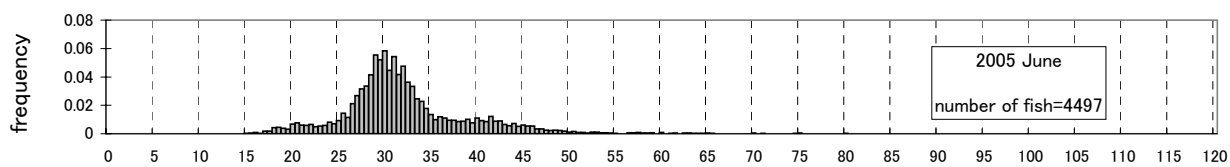
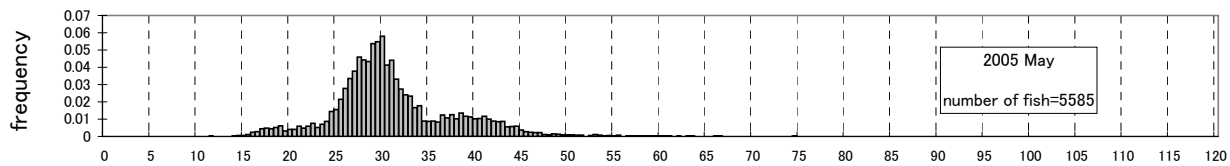
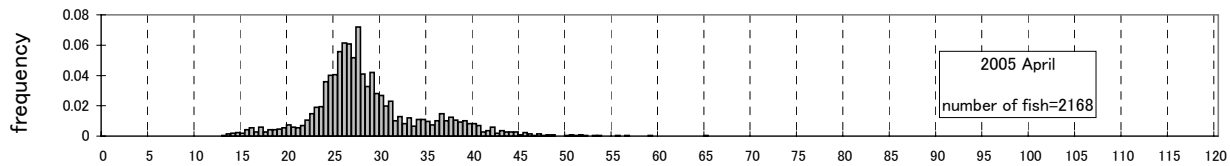
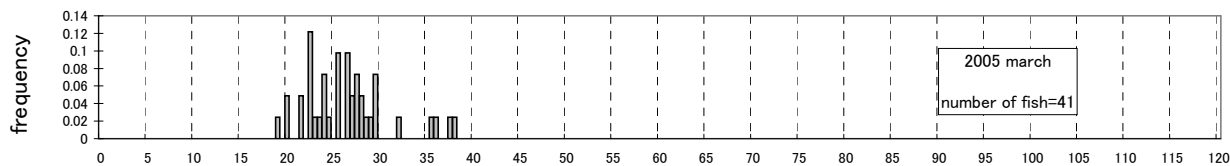
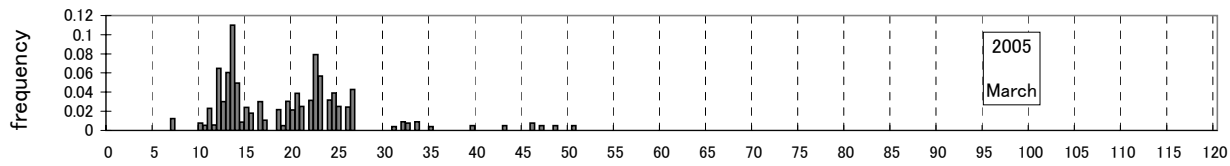
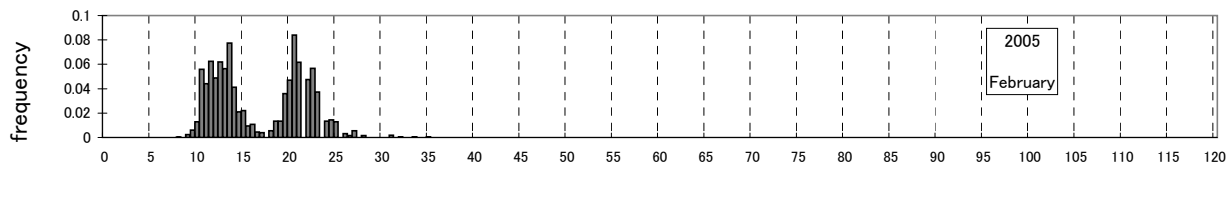
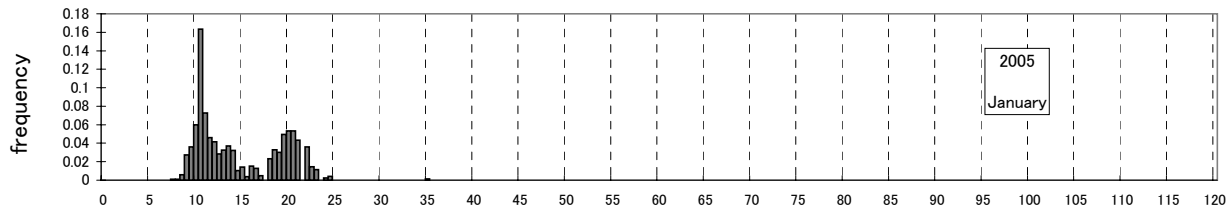
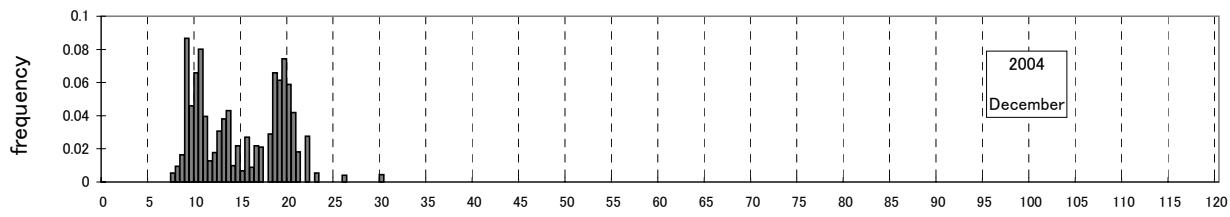
40 fish sampling  
individual fish weight frequency by month  
Data source: converted from  
"Catch at Length" data submitted by Australia to CCSBT



harvest data from packing lists collected by JFA  
number of fish=31,484

weight frequency analysis 2004/2005 season

40 fish sampling  
individual fish weight frequency by month  
Data source: converted from  
"Catch at Length" data submitted by Australia to CCSBT



harvest data from packing lists collected by JFA  
number of fish=27,632

whole weight (kg)